

## *Enterpad™ P120 - Quick Configuration Tutorial*

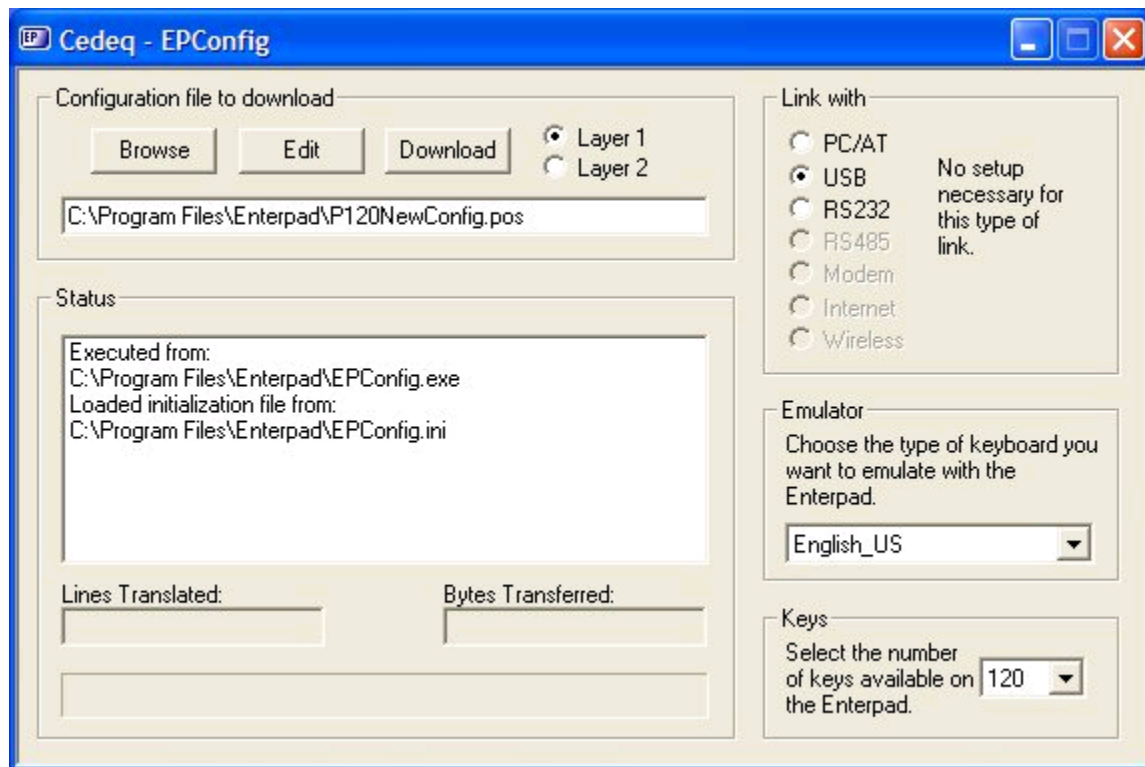
The purpose of this short tutorial is to assign the “hello” text string to the Enterpad key #1 which is the first key located in the upper left hand corner. It will provide an insight into the logical sequences required to configure the permanent memory of the Enterpad.

Choose the appropriate configuration environment:

- \* [Windows 98ME to Vista](#) for Enterpad with a USB or RS232 plug
- \* [DOS](#) or [Windows 3.1, 95 and 98](#) for Enterpad with DIN 5 or MiniDin 6 pin plug

### *Procedure to follow with the configuration software for Win98ME to Vista:*

- (1) Plug in the Enterpad
- (2) Download the configuration software from the following address:  
[www.cedeq.com/enterpad-p120/download-english.html](http://www.cedeq.com/enterpad-p120/download-english.html)
- (3) Run the downloaded file to install EPConfig
- (4) Start EPConfig to get the following window:



Note: the default options selected in the above window appear first. Changes will be kept for further use.

(5) “Link with” option: 1) If the Enterpad has a USB plug, choose USB, 2) if it has a DIN 5 or MiniDin pin plug, choose PC/AT, 3) if it has a RS232 plug, choose RS232.

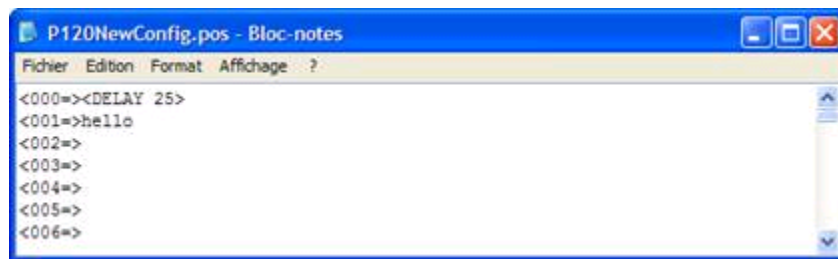
(6) “Emulator” option: Select the same language as your regular keyboard so that the Enterpad can properly transfer the requested character.

For example : the regular keyboard physical key used to send a “#” on the screen is not the same if your computer is set as an American or a French keyboard.

(7) “Keys” option: 1) If the Enterpad has 120 keys, choose 120, 2) if the Enterpad has 360 keys, choose 360.

(8) Click the “Edit” button to edit the configuration file in the text box below.

(9) Type “hello” immediately after <001=>



(10) Save the newly modified configuration file as “hello.pos”.

(11) Click the “Browse” button and select the saved file “hello.pos”.

(12) Click the “Download” button to compile and transfer the configuration file data to the Enterpad.

The “Status” section shows the configuration file compilation and transfer. If no errors are detected, “press shift+load on the Enterpad to continue” will appear to start the transfer.

If the sentence “transfer in progress” does not appear right away, hold the “shift” key down, press, then release the “load” key.



A delay ranging from 15 seconds to 2 minutes is required to execute a transfer. After this delay, the Enterpad configuration should be completed. That is, when the key #1 is pressed, the “hello” string should be transmitted by the Enterpad to the computer in the same way as it would be if the letters “h”, “e”, “l”, “l”, “o” would be typed on a regular keyboard.

Here is additional information concerning the configuration file:

<000=> indicates that the following functions are not assigned to any particular key. They are global functions.

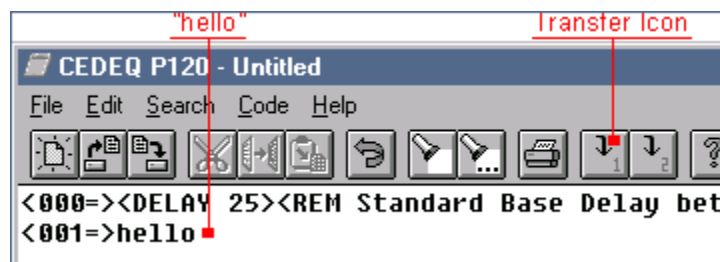
<Delay 25> shows the default character transmission speed of the Enterpad.

<001=> indicates the key to be programmed in this tutorial.

<REM...> is the abbreviation for “Remember”. This function allows the user to include comments.

## **Procedure to follow with the configuration software for Windows 3.1, 95 and 98:**

- (1) Plug in the Enterpad
- (2) Install the configuration software supplied with the Enterpad
- (3) Run the installed Enterpad program
- (4) Type “hello” immediately after <001=>
- (5) Click on the transfer icon



Clicking on the transfer icon will open a dialog box indicating the status of verification of the file. If no syntax errors are detected, the file will be compiled. If one or more errors are detected, the program will indicate the line on which the first error has been detected. To find the error, the line and not the key, must be checked

\*If no errors are detected, the program will ask to press on “shift+load” on the Enterpad to confirm the beginning of the transfer. The “shift+load” command is executed by pressing on “shift” in the lower hand corner of the Enterpad P120. While holding the “shift” key down, press, then release the “load” key, and then release the “shift” key.



A delay ranging from 15 seconds to 2 minutes is required to execute a transfer. After this delay, the Enterpad configuration should be completed. That is, when the key #1 is pressed, the “hello” string should be transmitted by the Enterpad to the computer in the same way as it would be if the letters “h”, “e”, “l”, “l”, “o” would be typed on a regular keyboard.

The following is additional information concerning the configuration file:

<000=> indicates that the following functions are not assigned to any particular key. They are global functions.

<Delay 25> shows the default character transmission speed of the Enterpad.

<001=> indicates the key to be programmed in this tutorial.

<REM...> is the abbreviation for “Remember”. This function allows the user to include comments.

## *Procedure to follow with the configuration software for DOS:*

(1) Plug in the Enterpad.

(2) Install the configuration software supplied with the Enterpad.

(3) Create the following file in a text editor (not included):

```
<000=><DELAY 25>  
<001=>hello
```

Simply write these two lines in a ".txt" file

(4) Save the file in a DOS text format file with the “.pos” extension.

(5) Run the “POS41 TheNameOfYourFileWithoutExtension 1”

Once the program has started to run, the status of verification of the file will appear on the screen. If no syntax errors are detected, the file will be compiled. If one or more errors are detected, the program will indicate the line on which the first error has been detected. To find the error, the line and not the key, must be checked.

If no errors are detected, the program will ask to press on “shift+load” on the Enterpad to confirm the beginning of the transfer. The “shift+load” command is executed by pressing on “shift” in the lower hand corner of the Enterpad P120. While holding the “shift” key down, press then release the “load”



A delay ranging from 15 seconds to 2 minutes is required to execute a transfer. After this delay, the Enterpad configuration should be completed. That is, when the key #1 is pressed, the “hello” string should be transmitted by the Enterpad to the computer in the same way as it would be if the letters “h”, “e”, “l”, “l”, “o” would be typed on a regular keyboard.

The following is additional information concerning the configuration file:

<000=> indicates that the following functions are not assigned to any particular key. They are global functions.

<Delay 25> shows the default character transmission speed of the Enterpad.

<001=> indicates the key to be programmed in this tutorial.